

FIRST FLOOR PLAN 1/8" = 1'

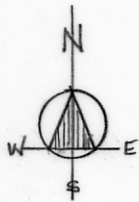
Existing Conditions, measured 1983 NYSEG

Babcock House

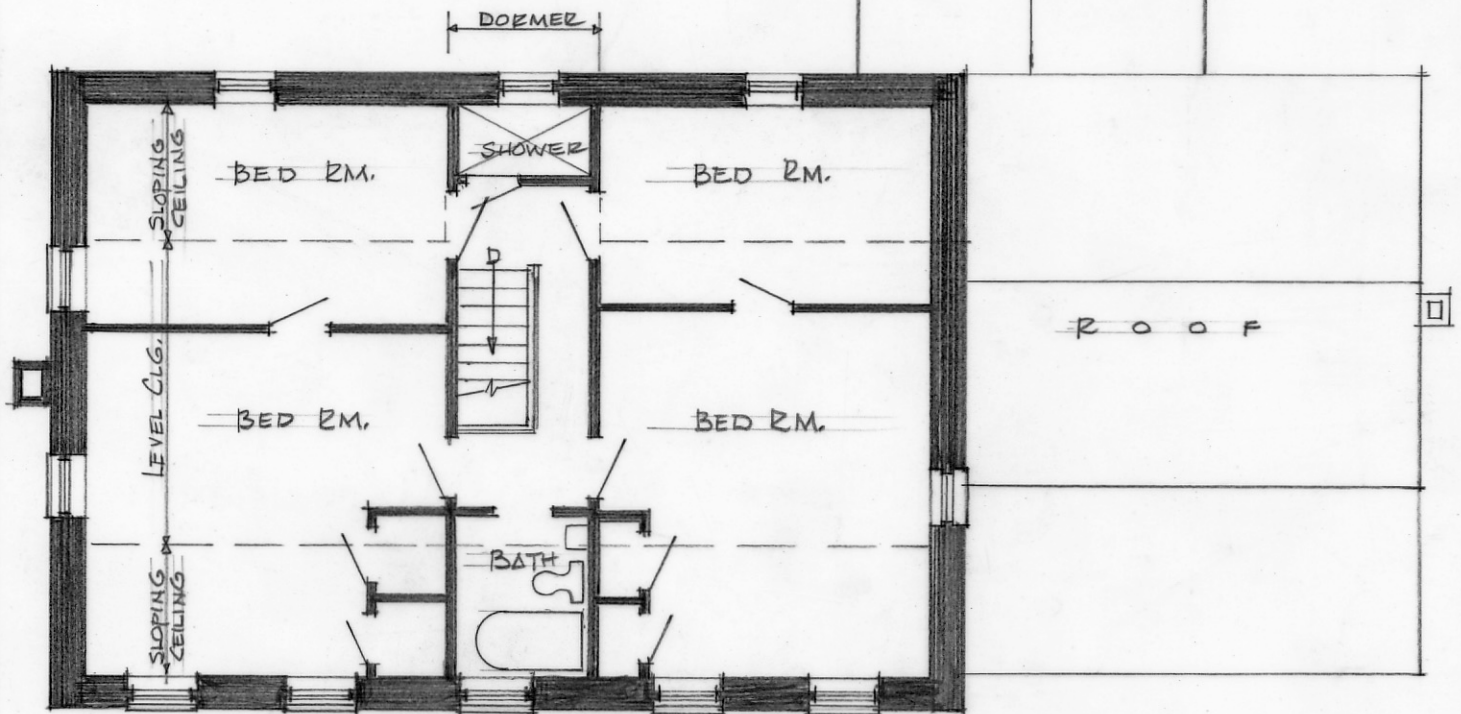
Route 18, Town of Somerset

Niagara County, New York

The Resource Center
The Cobblestone Society
Albion, New York



R O O F



SECOND FLOOR PLAN 1/8" = 1'

Existing Conditions, measured 1983 by NYSEG

The Resource Center
The Cobblestone Society
Albion, New York

Babcock House
Route 18, Town of Somerset
Niagara County, New York